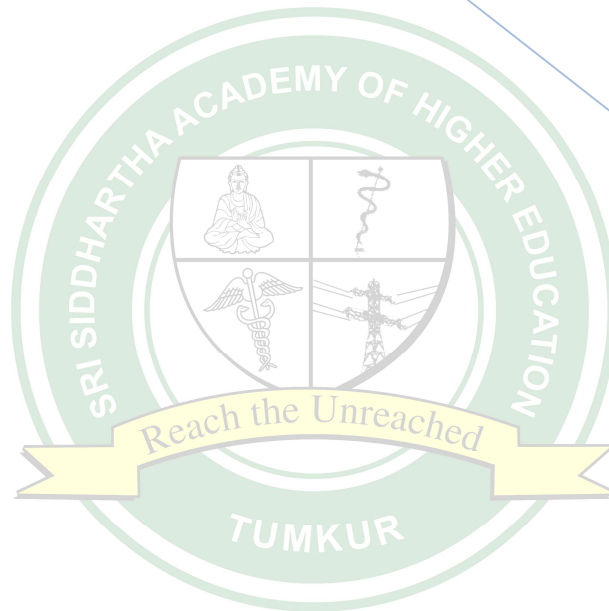


e - BROCHURE
FOR ADMISSION TO
POST GRADUATE MEDICAL (MD / MS)
AND
POST GRADUATE DENTAL (MDS)
COURSES FOR THE ACADEMIC YEAR 2025-26



Sri Siddhartha
Academy of Higher Education

Deemed-to-be-University

(Under Section 3 of the UGC Act, 1956)

Accredited 'A+' Grade by NAAC (2nd Cycle)

Agalakote, B.H. Road, Tumkur – 572 107

Karnataka, India

Phone : 91-816-2275516, Fax : 91-816 – 2275510

website: ssahe.edu.in Email: info@ssahe.edu.in

ABOUT THE ACADEMY

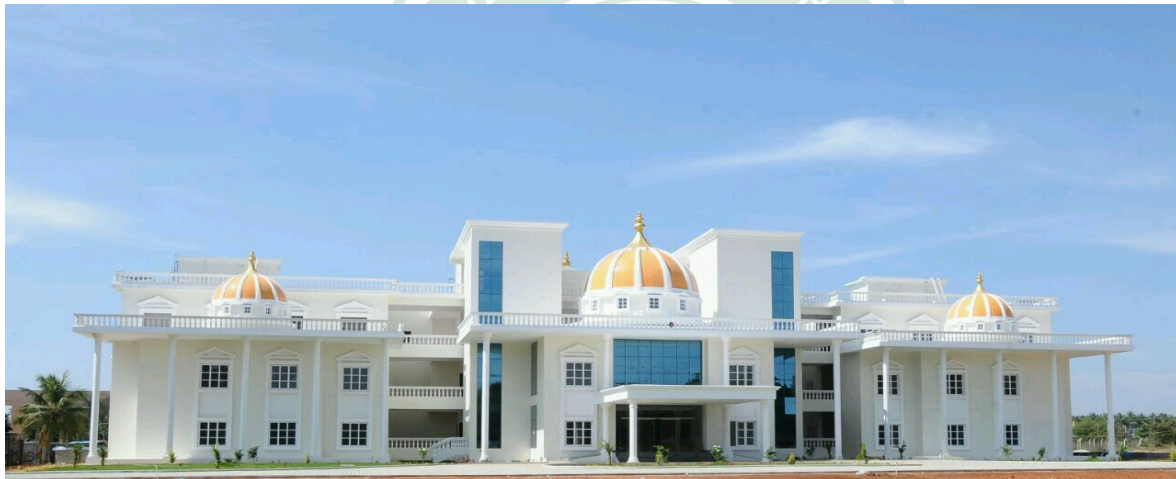
SRI SIDDHARTHA ACADEMY OF HIGHER EDUCATION

(Deemed to be University u/s 3 of the UGC Act, 1956)
Accredited 'A+' Grade by NAAC (2nd Cycle)

INTRODUCTION

Sri Siddhartha Academy of Higher Education (SSAHE) was declared a Deemed-to-be University under Section 3 of the UGC Act, 1956, through a notification issued by the Ministry of Human Resource Development (MHRD), Government of India, vide No. F.9-31/2006-U.3(A) dated 30th May 2008. The University commenced its operations in June 2008 with Sri Siddhartha Medical College and Sri Siddhartha Dental College as its constituent institutions. Subsequently, as per the Government of India notification No. F.9-31/2006-U.3(A) dated 16th December 2008, Sri Siddhartha Institute of Technology (SSIT) was also included as a constituent college of SSAHE.

The Academy is committed to achieving academic excellence and placing a strong emphasis on promoting research and innovation.



LOCATION

Sri Siddhartha Academy of Higher Education and its constituent colleges are located in Tumkur, a picturesque town situated 70 kilometers from Bangalore, along the Bangalore-Honnava National Highway (NH-26). The campus is just over an hour and a half drive from Bangalore International Airport and only 6 kilometers from the Tumkur Bus and Railway Stations.

Tumkur enjoys excellent connectivity by road and rail to various parts of the country. With its pleasant climate throughout the year and growing reputation as a knowledge hub, Tumkur is home to several premier professional educational institutions, including SSAHE.



VISION: “Entrancing Education to reach the unreached”

MISSION

- Providing a congenial ambience for learning and creativity in young minds.
- Providing high quality multidisciplinary education and prepare the student to be citizens of the world, proficient in their respective field and to respond to the needs of the society in which they live.
- Providing research and public service activities relevant to the needs of the society.
- To train the student to be morally responsible to the community and serve humanity to their utmost ability.
- Promoting own capacity to manage and develop the institution.

GOALS

- Providing high quality multidisciplinary graduates and motivate to serve humanity at large.
- Producing research papers in all fields, worthy of being published by National & International Journals.
- Providing all facilities for the pursuit of multidisciplinary knowledge, relevant to the needs of contemporary society.
- Implementing public services beneficial to and relevant with the needs of the community at large, national and international.

OBJECTIVES

- To provide for higher education leading to excellence and innovations in such branches of knowledge as may be deemed fit, primarily at undergraduate, post-graduate and research degree levels, fully conforming to the concept of University as defined herein.
- To engage in areas of specialization with proven ability to make distinctive contributions to the objectives of the higher education system in diverse disciplines.
- To provide for higher quality teaching and research recognized nationally and globally.

THRUST AREAS OF THE ACADEMY

Medical, Dental and Engineering Education & Research.

OFFICERS OF THE ACADEMY

CHANCELLOR	-	DR. G. PARAMESHWARA M.Sc (Agri.), Ph.D
VICE-CHANCELLOR	-	DR. K.B. LINGEGOWDA MBBS., MD., FIPM
REGISTRAR	-	DR. ASHOK MEHATHA M.Tech., Ph.D
DEAN (MEDICINE)	-	DR. M.B. SANIKOP MBBS, MS
DEAN (DENTISTRY)	-	DR. PRAVEEN B KUDVA BDS., MDS
DEAN (ENGINEERING & TECHNOLOGY)	-	DR. M.S. RAVIPRAKASHA B.E, M.TECH, Ph.D

COURSES OFFERED BY THE UNIVERSITY

Medical				Dental		Engineering & Technology		Allied Health Sciences		Research Programmes
UG	PG	SS		UG	PG	UG	PG	UG	PG	
MBBS	MD/MS	M.Ch DM	Fellowship Courses	BDS	MDS	BE	M.Tech MCA MBA	B.Sc (P)	M.Sc (P)	Ph.D

All the courses recognized by respective apex bodies.

ADMISSIONS

Sri Siddhartha Academy of Higher Education (SSAHE) adheres to the regulations and norms prescribed by the University Grants Commission (UGC) and other relevant statutory bodies.

Admissions to its constituent colleges are conducted on an All India basis and are NEET merit-based, through the centralized counselling process conducted by the Medical Counselling Committee (MCC) under the Ministry of Health and Family Welfare, Government of India.

Constituent Colleges of SSAHE

On-Campus Institutions

Sri Siddhartha Medical College

Agalakote, B.H. Road,
Tumkur – 572107
Karnataka, INDIA

Ph. No. : 8105042755

Website : ssmctumkur.org

E-Mail : info@ssmctumkur.org

Off-Campus Institutions

Sri Siddhartha Institute of Medical Sciences & Research Center,

T-Begur Village,
Nelamangala Taluk,
Bangalore Rural District – 56213

Ph. No. : 9606905865

Website : ssimrc.in

E-Mail : info@ssimrc.in

Recognized by National Medical Commission (NMC)

Sri Siddhartha Dental College

Agalakote, B.H.Road
Tumkur – 572107
Karnataka, INDIA

Ph. No. : 9828268896

Website : ssdctumkur.org

E-mail : info@ssdctumkur.org

Sri Siddhartha Institute of Technology

Maralur , Kunigal Road,
Tumkur- 572105
Karnataka, India.

Ph. No. : 0816-2200314

Website : www.ssit.edu.in

E-mail : principal@ssit.edu.in

**Recognized by
Dental Council of India (DCI)**

**Approved by AICTE,
Accredited by NBA, New Delhi**

Sri Siddhartha Medical College, Tumkur..... Since 1988

“Colleges are places where pebbles are polished and diamonds are shined.”

Sri Siddhartha Medical College (SSMC) embodies this philosophy by nurturing young minds and helping them realize their dreams. Every moment at SSMC is dedicated to the pursuit of excellence, continual improvement, and a commitment to service.

Established in 1988, SSMC is situated on a sprawling 250-acre campus with a built-up area of 130,134 sq. meters. The college boasts state-of-the-art infrastructure and is supported by a team of proficient and dedicated faculty. Their unwavering commitment lies in serving the community, imparting knowledge to students, and advancing the cause of medical care and education.



The teaching hospital attached to SSMC is a 1,200-bed facility, equipped with 12 major operation theatres, and accredited by NABH. It includes a Trauma Care Unit, ICU, CCU, NICU, and an RTPCR Laboratory accredited by NABL. The hospital also houses a Cardiac Care Centre, a Cath Lab, a Skill Lab, and fully functional male and female wards.

The Radiology Department features advanced imaging technologies, including Spiral CT, MRI, Mammography, and other diagnostic equipment. All academic departments are equipped with the latest medical technologies. The lecture halls are designed with modern audio-visual aids to enhance the learning experience. Academic departments are located in separate, well-planned buildings.

The campus includes a fully air-conditioned auditorium with a seating capacity of 1,200, serving as a venue for seminars, conferences, and cultural events. Hostel accommodation is provided separately for boys and girls, featuring amenities such as recreational areas, indoor sports facilities, gymnasiums, internet access, television rooms, cafeterias, and secure locker systems. Additional on-campus facilities include: Bank with ATM, Post office, Food courts, Stationery and pharmacy outlets & High-speed Wi-Fi connectivity throughout the campus

COURSES OFFERED

MEDICAL PROGRAMMES		
UG COURSE	PG COURSES	SUPER SPECIALITY COURSES
MBBS	PRE-CLINICAL (NON-CLINICAL) 1. MD Anatomy 2. MD Physiology	1. M.Ch. Paediatrics Surgery 2. DM Nephrology
	PARA-CLINICAL (NON-CLINICAL) 3. MD Pathology 4. MD Microbiology 5. MD Community Medicine 6. MD Pharmacology	ALLIED & HEALTHCARE PROGRAMMES
	CLINICAL 7. MD General Medicine 8. MD Paediatrics 9. MD Anaesthesiology 10. MD Radio- Diagnosis 11. MD Dermatology, Venereology & Leprosy 12. MD Psychiatry 13. MD Respiratory Medicine 14. MD Emergency Medicine 15. MS Obstetrics & Gynaecology 16. MS Orthopaedics 17. MS Otorhinolaryngology 18. MS General Surgery 19. MS Ophthalmology	B.Sc Allied & Healthcare Courses 1. Medical Laboratory Technology 2. Operation theatre and Anaesthesia Technology 3. Medical Imaging Technology 4. Cardiac Care Technology 5. Renal Dialysis Technology 6. Optometry Technology 7. Perfusion Technology M.Sc Allied & Healthcare Courses 1. Medical Laboratory Technology 2. Operation Theatre and Anaesthesia Technology 3. Medical Imaging Technology 4. Clinical Embryology 5. Clinical Research 6. Master's in Public Health 7. Central Sterile Supply Department Technology
MEDICAL FELLOWSHIP PROGRAMMES		
Dermato-Surgery, Trichology, Aesthetic Dermatology, Otolaryngology and Implantation Otolaryngology, Rhinology and Anterior Skull Base Surgery & Laryngology		

DEPARTMENTS

All departments at Sri Siddhartha Medical College are well-equipped with modern infrastructure to support both academic and clinical training. Each department features:

- Experimental and practical laboratories
- Spacious lecture halls
- Demonstration rooms
- Practical classrooms

These facilities are enhanced with advanced audio-visual equipment to ensure effective teaching and interactive learning.

The faculty comprises highly qualified and experienced professors, clinicians, and surgeons who are dedicated to delivering high-quality education and hands-on training.

In addition to training students enrolled in the MBBS program, the departments also house specialized diagnostic laboratories, which include:

- Diagnostic Bacteriology
- Serology and Immunology
- Mycology
- Protozoology
- Helminthology
- Histopathology
- Cytology
- Blood Bank
- Haematology

These laboratories not only support academic learning but also contribute significantly to patient care and clinical diagnostics.

RESEARCH

Research is an integral component of the academic framework at Sri Siddhartha Medical College. To foster a culture of inquiry and innovation, a dedicated Research Centre has been established within the institution.

Numerous research projects are currently in progress, with several more in the pipeline. Faculty and students are actively involved in scholarly activities, and their work is regularly published in national and international journals, reflecting the institute's growing contribution to the global medical research community.

To further enrich the academic environment, the institute organizes Guest Lectures on a regular basis. These sessions, delivered by eminent researchers and professionals, provide valuable insights and enhance the research capabilities of both students and faculty members.

CENTRAL LIBRARY

Sri Siddhartha Medical College houses a well-equipped Central Library in an independent building, spanning over 17,000 sq. ft. of built-up area. The library is designed to support academic and research pursuits in a student-friendly and eco-conscious environment.

Key Features:

- *Extensive Collection:* The library maintains a rich collection of over 20,000 books and 200 journals, encompassing both Indian and international publications.

- *Digital Library:* A dedicated digital library section provides access to a wide range of e-journals and e-books, supporting advanced learning and research.
- *Internet and Wi-Fi:* High-speed internet connectivity is available for students and faculty to facilitate online learning and research.
- *Extended Hours:* The library remains open till late evening every day, ensuring ample time for academic engagement.
- *24x7 Reading Room:* A separate reading room with 24/7 access is provided to support uninterrupted study sessions for students.
- *Special Collections:* The library houses a curated collection of corporate annual reports, project reports, and materials on various research domains, particularly in the private and public sectors.
- *Book Bank Facility:* Students have access to a book bank, allowing them to borrow essential textbooks for an extended period.
- *Support Services:* The library also offers bibliographic services, along with photocopying and binding facilities for the convenience of students and staff.



The spacious and eco-friendly layout of the library ensures a calm, peaceful atmosphere conducive to serious study and research.

HOSPITAL

The Sri Siddhartha Medical College (SSMC) Hospital is a 1,200-bedded healthcare facility that serves as both a center for quality patient care and a practical training ground for medical students. Housed in separate buildings for the Outpatient Department (OPD) and Casualty, the hospital comprises fully equipped and independently functioning departments including Medicine, Surgery, Obstetrics and Gynaecology (OBG), Ophthalmology, Orthopaedics, Paediatrics, Psychiatry, ENT, Dermatology, Radiology, and Emergency Medicine. It features 12 major operation theatres in addition to minor ones, and is well-staffed with skilled doctors and specially trained nurses who deliver compassionate care, particularly to the rural population it primarily serves. The hospital's layout and design, including waiting areas, wards, rooms, corridors, and landscaped lawns, are aesthetically planned to provide a calm and comforting environment for patients and visitors. Along with advanced medical

equipment and diagnostic tools, the hospital offers several modern healthcare services to benefit the regional community. For medical students, this hospital offers a rare and valuable opportunity to gain real-time clinical exposure, providing them with a strong foundation and holistic perspective in their medical education.

HEALTH CENTRE

The campus houses a well-equipped and fully furnished Primary Health Centre with a plinth area of 360 sq. meters, established with the aim of serving the local population, particularly those residing in the surrounding areas. Staffed by qualified and experienced doctors and medical personnel, the Health Centre offers essential medical facilities including a minor operation theatre, a preliminary testing laboratory, and well-furnished emergency wards to manage urgent care situations. These healthcare services are readily available to students, faculty, staff, and other campus residents. The Health Centre also serves the Tumkur CMC Ward Nos. 29 and 30, contributing significantly to the community's primary healthcare needs.

COMMUNITY ACTIVITIES

Sri Siddhartha Medical College actively engages in various community outreach programs as part of its commitment to public health and social responsibility. The institution regularly organizes voluntary blood donation camps, encouraging participation from students, staff, and the local community. Periodic health check-up camps are conducted in rural areas, aimed at early detection and prevention of common illnesses, thereby improving healthcare accessibility for underserved populations. Additionally, the college actively participates in and supports National Health Programmes, contributing to broader public health goals and awareness initiatives.

MEDICAL EDUCATION DEPARTMENT ACTIVITY

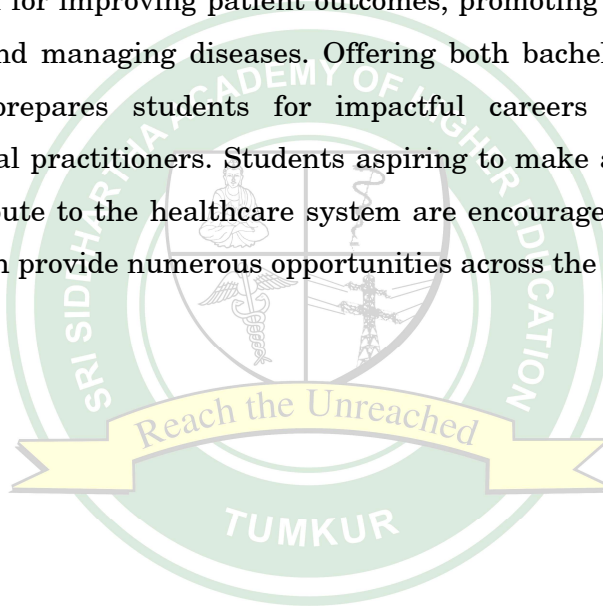
The Medical Education Department at Sri Siddhartha Medical College actively facilitates academic excellence through a range of initiatives. An Orientation Program is conducted annually for newly admitted undergraduate and postgraduate students to familiarize them with the academic environment and curriculum. To enhance teaching effectiveness, the department organizes teaching methodology programs specifically designed for newly appointed faculty members. Additionally, the department regularly hosts interdepartmental seminars, guest lectures, and faculty development programs, fostering continuous professional growth and encouraging collaborative learning across disciplines.

HOSTELS

The campus offers separate hostel accommodations for boys and girls, with distinct buildings allocated for undergraduate and postgraduate students to ensure a comfortable and secure living environment. The hostels provide nutritious vegetarian meals catering to both North and South Indian tastes, ensuring students from diverse backgrounds feel at home.

ALLIED HEALTH PROGRAMMES

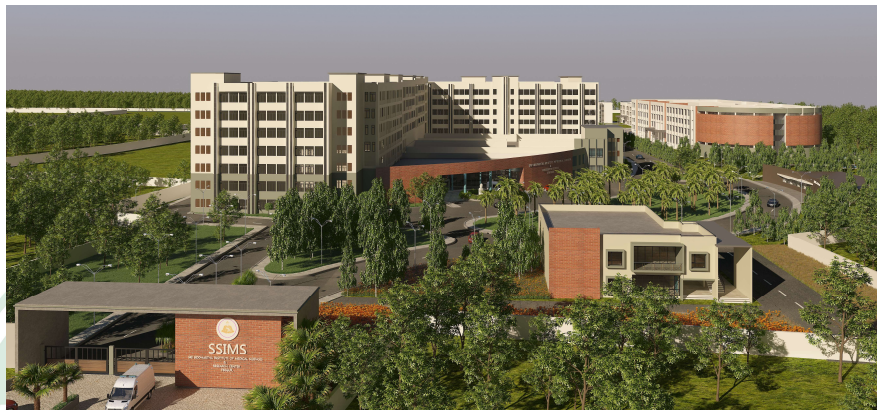
At Sri Siddhartha Medical College & Hospital's College of Allied Health Sciences, we offer a range of rewarding programs in diverse fields such as Operation Theatre & Anaesthesia Technology, Radiology, Renal Dialysis, Perfusion Technology, Respiratory Care, Imaging Technology, and more. These programs are designed to equip students with specialized skills and knowledge essential for improving patient outcomes, promoting health and wellness, and effectively preventing and managing diseases. Offering both bachelor's and master's degree courses, the College prepares students for impactful careers as frontline healthcare professionals and medical practitioners. Students aspiring to make a significant difference in patient care and contribute to the healthcare system are encouraged to pursue allied health sciences programs, which provide numerous opportunities across the healthcare industry.



Sri Siddhartha Institute of Medical Sciences & Research Centre Since 2019

Established in the year 2019, **Sri Siddhartha Institute of Medical Sciences & Research Centre (SSIMS&RC)** stands as a beacon of academic brilliance and healthcare excellence. Nestled within a picturesque, eco-friendly 55-acre campus, the institute combines world-class infrastructure with an unwavering commitment to quality education and patient care.

SSIMS&RC embodies a visionary approach to medical education—where innovation, research, and compassion converge to nurture future leaders in medicine. With a team of highly qualified, experienced, and dedicated faculty, the institution



upholds its mission to impart cutting-edge medical knowledge, provide exceptional clinical training, and extend holistic care to the community.

Integrated Teaching Hospital

The institute is complemented by a state-of-the-art, 850-bedded teaching hospital, seamlessly integrated to support academic pursuits and clinical excellence. Accredited by the National Accreditation Board for Hospitals & Healthcare Providers (NABH), the hospital is a tertiary care center offering comprehensive services that include:

- 10 fully equipped modular operation theatres
- Advanced Trauma Care Unit, ICU, CCU, and NICU
- High-end diagnostic capabilities with CT, MRI, Ultrasound, and a RTPCR Laboratory accredited by NABL
- Separate inpatient wards for male and female patients ensuring privacy and specialized care

This clinical infrastructure offers students immersive, hands-on learning experiences across diverse specialties, while delivering compassionate, evidence-based care to the public.

Academic Infrastructure & Learning Environment

SSIMS&RC's academic architecture is thoughtfully designed to foster innovation, research, and interdisciplinary learning. Key features include:

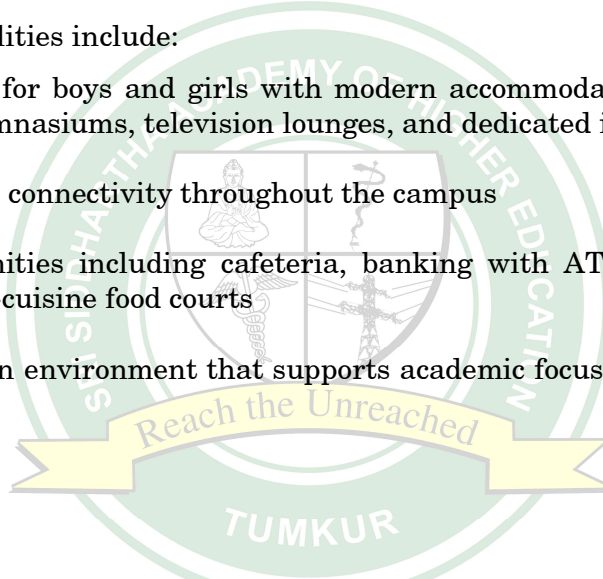
- Digitally-enabled, air-conditioned lecture halls with a seating capacity of 200, ideal for symposia, CME programs, and academic conventions
- Independent departmental blocks outfitted with the latest medical teaching and simulation equipment
- Robust mentorship and clinical rotation programs in alignment with national competency-based medical education standards

Campus Life & Student Amenities

The campus is a self-sustained educational ecosystem, providing a holistic and enriching student experience. Facilities include:

- Separate hostels for boys and girls with modern accommodations, recreational zones, indoor sports, gymnasiums, television lounges, and dedicated internet access
- High-speed Wi-Fi connectivity throughout the campus
- On-campus amenities including cafeteria, banking with ATM, pharmacy, stationery stores, and multi-cuisine food courts

The institution fosters an environment that supports academic focus, physical well-being, and personal growth.



Strategic Location

SSIMS&RC is located just 38 kilometers from Bangalore, India's vibrant technology and innovation capital. The campus is situated alongside the Bangalore–Honnavar Highway, offering seamless connectivity via both road and rail. Surrounded by lush greenery, the location provides a tranquil yet accessible setting conducive to learning and healing.

SSIMS&RC – Where future healthcare professionals are shaped through knowledge, service, and innovation.

COURSES OFFERED

MEDICAL	
UG PROGRAMME	PG PROGRAMMES
MBBS	PRE-CLINICAL (NON-CLINICAL)
	1. MD Anatomy
	2. MD Physiology
	3. MD Biochemistry
	PARA-CLINICAL (NON-CLINICAL)
	4. MD Pathology
	5. MD Pharmacology
	CLINICAL
	6. MD General Medicine
	7. MD Paediatrics
	8. MD Anaesthesiology
	9. MD Radio- Diagnosis
	10. MD Dermatology, Venereology & Leprosy
	11. MD Psychiatry
	12. MD Respiratory Medicine
	13. MS Obstetrics & Gynaecology
	14. MS Orthopaedics
15. MS Otorhinolaryngology	
16. MS General Surgery	
17. MS Ophthalmology	



DEPARTMENTS

At SSIMS&RC, each academic and clinical department is meticulously developed to support comprehensive medical education and foster advanced diagnostic and research capabilities.

Every department is equipped with:

- State-of-the-art experimental and practical laboratories
- Spacious, technology-enabled lecture halls and demonstration rooms
- Dedicated practical classrooms outfitted with modern audio-visual teaching aids

The departments are led by a distinguished team of highly qualified professors, clinicians, and surgeons, each bringing a wealth of experience and expertise in their respective fields. Their commitment to academic rigor and clinical mentorship ensures the highest standards of teaching and training for MBBS students.

Advanced Diagnostic and Research Facilities

In addition to undergraduate teaching, several departments host specialized diagnostic and research laboratories that contribute significantly to clinical services and medical research.

These include:

- Diagnostic Bacteriology Laboratory
- Serology and Immunology Units
- Mycology and Protozoology Laboratories
- Helminthology Research Facility
- Histopathology and Cytopathology Laboratories
- Advanced Haematology Section
- Fully equipped Blood Bank with modern transfusion services

These diagnostic units not only enhance the hands-on learning experience for students but also support the hospital's mission of delivering accurate, timely, and quality healthcare services.

All the department are well equipped with experimental laboratory, practical Laboratory, spacious Lecture Hall, Demonstration room, Practical class room, aided with Audio-visual equipments. The faculty members are highly qualified and experienced Professors and Surgeons.

Besides teaching and training the students to MBBS Course, the department has special diagnostic laboratories like Diagnostic Bacteriology, Serology and Immunology, Mycology, Protozoology, Helminthology, Histopathology, Cytology, Blood Bank and Haematology etc.,

RESEARCH

At SSIMS&RC, research is an integral pillar of academic excellence and clinical advancement. The institution actively promotes a culture of inquiry, innovation, and evidence-based practice across all disciplines.

Faculty members are deeply engaged in scholarly activities, regularly publishing research papers in reputed national and international journals. Their contributions span a wide array of medical and biomedical fields, furthering knowledge and advancing healthcare practices.

To enrich the academic environment, the institute routinely organizes Guest Lectures, Expert Talks, and Research Seminars, providing a dynamic platform for knowledge exchange. These sessions are designed to:

- Foster interdisciplinary collaboration
- Expose students and faculty to emerging trends and global best practices
- Inspire innovative thinking and critical analysis

The institution is committed to strengthening its research ecosystem by encouraging student participation, facilitating ethical clinical trials, and supporting faculty-led projects through institutional and external funding.

CENTRAL LIBRARY:

The Central Library at SSIMS&RC is a cornerstone of the institution's academic infrastructure, purposefully designed to support and enhance learning, teaching, and research. It is a technologically advanced, resource-rich environment that fosters academic inquiry and intellectual growth.

Key highlights of the Central Library include:

- A comprehensive collection of textbooks, reference materials, and research journals—both Indian and international—spanning all medical and allied health sciences disciplines.
- An integrated Digital Library platform offering seamless access to a vast repository of e-journals, e-books, and academic databases, ensuring global connectivity for learners and researchers.
- High-speed Wi-Fi and internet facilities are available throughout the library, facilitating access to online resources for students and faculty.
- Extended operational hours, with the library remaining open till late evenings on all days to accommodate diverse academic schedules.

Facilities & Student Support

- Dedicated 24x7 reading rooms provide a quiet, well-lit, and comfortable space for uninterrupted study.
- A curated archive of corporate annual reports, project reports, and research theses supports interdisciplinary learning and data-driven research.
- Book Bank services offer students equitable access to core learning materials throughout the academic year.
- Bibliographic assistance, photocopying, and binding services are available to support academic writing, assignments, and project documentation.

HOSPITAL

The teaching hospital at Sri Siddhartha Institute of Medical Sciences & Research Centre (SSIMS&RC) is a cornerstone of the institution's commitment to delivering comprehensive, compassionate, and quality healthcare. With a capacity of 850 beds, the hospital is a state-of-the-art facility designed to serve both as a premier healthcare provider and a vibrant center for clinical training.

The hospital houses independent, fully functional departments for:

- General Medicine
- General Surgery
- Obstetrics & Gynecology (OBG)
- Ophthalmology
- Orthopaedics
- Paediatrics
- Psychiatry
- Otorhinolaryngology (ENT)
- Dermatology
- Radiology

A dedicated OPD (Outpatient Department) block and Casualty Unit are designed to streamline patient flow and ensure timely care, particularly in emergencies. The hospital features:

- 10 fully equipped major operation theatres
- Additional minor OT facilities for day-care and routine procedures
- Advanced diagnostic services and critical care units

A Holistic Healing Environment

SSIMS&RC Hospital is more than just a clinical space—it is a thoughtfully designed healing environment. Every aspect of its architecture and interior design, from aesthetically laid-out waiting areas and patient rooms to well-ventilated wards and lush green outdoor spaces, is crafted to promote well-being and comfort for both patients and their families.

The hospital's workforce includes highly skilled physicians, surgeons, and specially trained nursing professionals, who deliver care with precision and compassion. Their efforts are bolstered by cutting-edge medical technologies and continuous quality improvement practices.

A Living Laboratory for Medical Students

The hospital serves as a dynamic, real-world learning environment for students of SSIMS&RC. With direct exposure to a broad spectrum of medical conditions and clinical cases,

students gain invaluable insights into modern medical practice. This integration of academics and patient care fosters:

- Enhanced clinical acumen
- Early development of diagnostic and decision-making skills
- A holistic understanding of patient-centered care

In serving the healthcare needs of the rural and semi-urban communities, SSIMS&RC Hospital not only fulfils a vital societal role but also instils in its students a sense of social responsibility and ethical practice.

SSIMS&RC Hospital has separate building for OPD and Casualty with independent departments of Medicine, Surgery, OBG, Ophthalmology, Orthopaedics, Paediatrics, Psychiatry, ENT, Dermatology, and Radiology. It is an 850-bed capacity hospital, fully equipped with 10 major operation theatres in addition to minor operation theatres. SSIMRC is caring to the needs of rural population. There are skilled doctors with specially trained nurses to give a healing touch to the patients. The layout, interiors and exteriors of the Hospital are aesthetically designed so that every facet: waiting areas, corridors, rooms, wards, as well as the neatly manicured lawns, all provide a soothing ambience for patients and their visitors. Apart from the most advanced medical gadgets and equipment's, the Hospital has introduced several new services for the convenience of the populace in the region. The enormous advantage of having such a campus is that the students get a unique and practical insight into a contemporary medical world, giving them a head start and lending a rare perspective to their academic pursuits.

COMMUNITY ENGAGEMENT & OUTREACH ACTIVITIES

SSIMS&RC is deeply committed to community welfare and public health promotion, actively extending its resources and expertise beyond the campus to serve the broader society. Through a range of structured outreach initiatives, the institution instils values of empathy, service, and social responsibility among its students and staff.

Key Community-Based Activities Include:

- **Voluntary Blood Donation Drives:**

Regularly organized in collaboration with the institution's blood bank and local organizations, these drives encourage voluntary participation and help maintain a robust blood supply for emergency medical needs.

- **Rural Health Screening Camps:**

Periodic health check-up camps are conducted in underserved rural areas, offering diagnostic services, medical consultations, and basic treatment. These camps play a vital role in early detection and management of common health conditions while raising awareness on hygiene and preventive care.

- **Participation in National Health Programs:**

SSIMS&RC actively contributes to various national health missions and public health initiatives, aligning with government programs such as:

- Pulse Polio Immunization
- Tuberculosis Control (RNTCP)
- Non-Communicable Diseases (NCD) screening
- Reproductive and Child Health (RCH) initiatives

These activities reinforce the institution's role as a stakeholder in national healthcare objectives.

Through these outreach efforts, SSIMS&RC not only enhances community health but also provides its students with real-world exposure to public health challenges, thereby enriching their learning with social and ethical dimensions.

MEDICAL EDUCATION DEPARTMENT ACTIVITY

The Medical Education Department at SSIMS&RC plays a pivotal role in enriching academic excellence and fostering a learner-centric, competency-based medical education ecosystem. The department ensures continuous professional development for both faculty and students through structured training programs and scholarly activities.

Core Activities of the Medical Education Department:

- **Orientation Program for Newly Admitted Undergraduate Students:**

A comprehensive induction program is conducted to welcome first-year MBBS students, helping them transition smoothly into medical education. The orientation includes:

- Introduction to the curriculum and institutional ethos
- Sessions on ethics, professionalism, and communication skills
- Familiarization with support systems, including mentorship and counseling services

- **Teaching Methodology Training for Newly Appointed Faculty:**

Newly inducted faculty members undergo structured workshops on modern pedagogical approaches, assessment techniques, and student engagement strategies. The program ensures alignment with the Competency-Based Medical Education (CBME) framework recommended by the National Medical Commission.

- **Academic Enrichment Activities:**

The MED regularly organizes a variety of academic forums to promote interdisciplinary collaboration and knowledge sharing:

- Interdepartmental Seminars that encourage collaborative teaching and integrated learning
- Guest Lectures by renowned experts from premier medical and research institutions
- Faculty Development Programs (FDPs) focused on medical education technologies, assessment tools, research methodology, and clinical teaching excellence

Through these initiatives, the Medical Education Department fosters a culture of academic innovation, lifelong learning, and reflective practice among the teaching faculty, while simultaneously ensuring that students receive a dynamic, holistic medical education.

HOSTELS

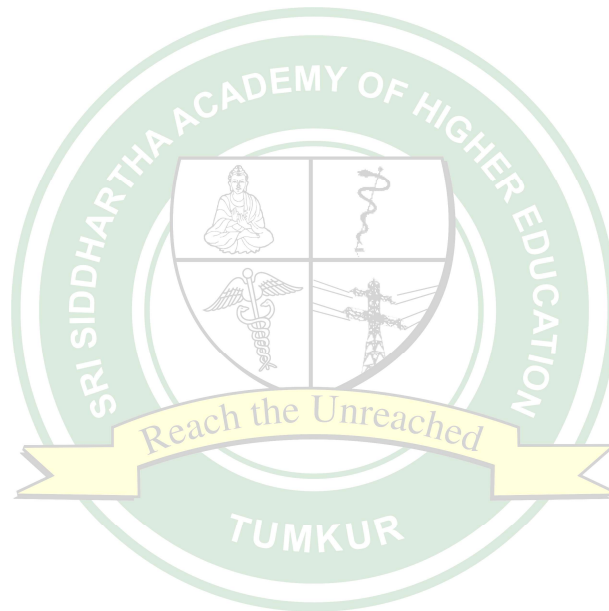
Hostel Accommodation

SSIMS&RC provides separate, secure hostel facilities for both male and female students, ensuring a comfortable, supportive, and homely living environment that complements academic life.

Key Features:

- Well-maintained hostel blocks located within the campus, offering easy access to academic and recreational facilities
- North and South Indian vegetarian cuisine is served in hygienic, spacious dining halls, catering to diverse regional preferences and nutritional needs
- Rooms are well-ventilated and furnished with essential amenities to support a conducive study and rest environment
- Round-the-clock security, wardens, and maintenance services ensure student safety and wellbeing
- Facilities for indoor games, recreation areas, Wi-Fi access, and laundry services are available to enhance residential life

The hostel environment at SSIMS&RC is thoughtfully designed to foster a sense of community, discipline, and personal growth—providing students with the stability and comfort they need to focus on their academic and clinical pursuits.



Sri Siddhartha Dental College Since 1992

Founded in 1992 by the esteemed Sri Siddhartha Education Society, Sri Siddhartha Dental College (SSDC) was established with a visionary goal—to provide exceptional dental education and advanced oral healthcare services to the rural population of Tumkur, Karnataka. As a result, the institution has consistently strived to deliver cutting-edge education, foster groundbreaking research, and serve the broader community through a commitment to excellence in dentistry.

Academic Excellence & Vision:

With a focus on both the science and the art of dentistry, SSDC has evolved over the years into a prestigious institution recognized for its unwavering commitment to patient-centered care and innovative dental education. By



constantly redefining standards in oral healthcare, SSDC aims to be at the forefront of dental education, promoting comprehensive oral health policies that respond to the diverse needs of society.

Campus and State-of-the-Art Facilities

Strategically located just 100 meters from the Sri Siddhartha Medical College, SSDC occupies a sprawling 25-acre campus with a built-up area of 73,286 sq. ft. The college is designed to provide an optimal learning environment, featuring well-equipped departments, modern undergraduate and postgraduate clinics, seminar halls, and specialized laboratories. This infrastructure is tailored to meet the academic, clinical, and research needs of students and faculty alike.

Mobile Dental Unit for Rural Outreach

A hallmark of SSDC's commitment to community service is its Mobile Dental Unit, which allows the institution to deliver critical oral healthcare services to underserved rural areas. This initiative is a key component of SSDC's outreach program, ensuring that high-quality dental care is accessible to populations who would otherwise face significant barriers.

Faculty & Research Leadership

SSDC takes immense pride in its highly qualified and dedicated faculty members, whose expertise and commitment to student success are central to the college's academic achievements. The faculty maintains rigorous adherence to the standards set forth by the Dental Council of India (DCI). Beyond their teaching roles, SSDC's educators actively engage in academic research, often presenting their work at national and international conferences, where they contribute to the advancement of dental science and practice.

The institution's faculty and staff are deeply invested in the holistic development of students, preparing them not only as competent professionals but also as future leaders in the field of dentistry.

A Legacy of Excellence

Over the past three decades, SSDC has built a legacy of excellence in dental education, healthcare, and community outreach. By blending high-quality teaching with a patient-first philosophy, SSDC continues to shape the future of dentistry, both regionally and nationally, while nurturing the development of well-rounded dental professionals ready to meet the evolving challenges of the field.

MOTTO AND PHILOSOPHY



*At Sri Siddhartha Dental College (SSDC), our guiding motto is:
"Good Citizen First, then Good Dental Surgeon."*

This philosophy underscores our holistic approach to education, emphasizing not only academic and clinical excellence but also the development of character, ethics, and social responsibility. We believe that a successful dental professional must first and foremost be a responsible and compassionate individual who is committed to the well-being of society.

To achieve this ideal, SSDC provides a rigorous, disciplined training program that blends academic learning with extracurricular activities, fostering well-rounded individuals who are equipped to meet both the technical and ethical challenges of modern dentistry.

Centre of Excellence: Siddhartha Smile

As part of our commitment to providing the highest standards of dental care and education, SSDC proudly houses the "Siddhartha Smile" Centre of Excellence in Dentistry. This cutting-edge facility is equipped with state-of-the-art technology and advanced armamentarium, enabling us to offer pioneering treatments in the following specialized areas:

- Implant Dentistry
- Laser Dentistry
- Oral and Maxillofacial Surgery

At Siddhartha Smile, patients benefit from the most modern techniques and treatments available, ensuring the highest standards of care. The center also serves as a dynamic learning environment for students, allowing them to gain hands-on experience with advanced procedures and technologies under the supervision of expert faculty.

COURSES OFFERED

Under Graduate	Post Graduate
Bachelor of Dental Surgery (BDS)	MDS : Master of Dental Surgery <ol style="list-style-type: none">1. Conservative Dentistry & Endodontics2. Orthodontics & Dentofacial Orthopedics3. Periodontology4. Oral & Maxillofacial Surgery5. Paedodontics & Preventive Dentistry6. Prosthodontics and Crown & Bridge7. Oral Pathology & Microbiology

DEPARTMENTS

- Conservative Dentistry and Endodontics
- Oral & Maxillofacial Pathology & Oral Microbiology
- Oral and Maxillofacial Surgery
- Oral Medicine and Radiology
- Orthodontics & Dentofacial Orthopedics
- Paedodontics & Preventive Dentistry
- Periodontology
- Prosthodontics and Crown & Bridge
- Public Health Dentistry

SATELLITE DENTAL CLINICS

In line with our commitment to providing comprehensive dental care to both urban and rural populations, Sri Siddhartha Dental College (SSDC) operates two satellite dental clinics designed to serve diverse communities:

- **Rural Health Centre:**
Located in Nagavalli, Tumkur Rural, this clinic focuses on providing essential dental care and health education to the rural population. Through this initiative, SSDC ensures that high-quality dental services are accessible to underserved areas, improving oral health awareness and treatment in rural regions.
- **Urban Health Centre:**
Situated at the Sri Siddhartha Institute of Technology, Tumkur Urban, this clinic serves as a vital resource for the local urban population, offering advanced dental care and educational opportunities for students. The Urban Health Centre is equipped with modern facilities to ensure comprehensive patient care and hands-on learning experiences for dental students.

LIBRARY FACILITIES

The Sri Siddhartha Dental College is proud to offer a well-equipped Dental Library, in addition to the Central Library, to support the academic and research needs of its students and faculty. The library is a vital resource, providing access to a wide range of books, journals, and digital materials.

Key features of the library include:

- **Collection of Books and Journals:**
The library houses a comprehensive collection of 3,845 books and 307 current journals across various dental specialties, ensuring that students and faculty have access to the latest research and textbooks.
- **Specialized Sections:**
The library is organized into dedicated sections to cater to different needs:
 - Reference Section for quick access to essential resources
 - Journal Section for academic and research-oriented reading
 - Postgraduate (PG) Section offering specialized resources for postgraduate students.

- **Digital Section:**

The library includes a Digital Section that provides access to e-journals, offering students and faculty the ability to explore a vast array of digital research articles, publications, and resources.

- **Subscription to Printed Journals:**

To further support Postgraduate students, the library subscribes to printed volumes of journals in all dental specialties, ensuring comprehensive coverage of both academic and clinical developments.

HOSTEL FACILITIES

Sri Siddhartha Dental College offers comfortable and well-maintained hostel accommodations for both boys and girls, with separate facilities to ensure privacy and convenience.

Key features of the hostel facilities include:

- **Separate Hostels for Boys and Girls:**

The hostels are designed to provide a safe, secure, and homely environment for students, with individual hostels for boys and girls.

- **Catering Services:**

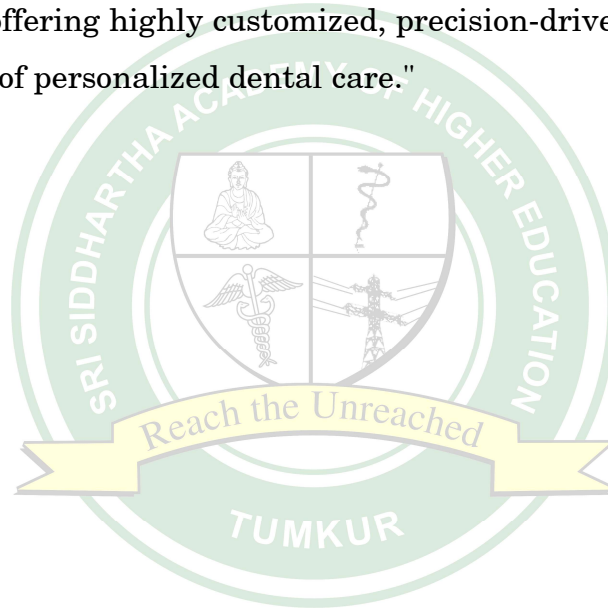
The hostels provide nutritious vegetarian meals, with both North Indian and South Indian styles of cuisine available, ensuring a variety of food options to cater to the diverse preferences of students. The hostels are equipped with essential amenities to make the stay comfortable, including well-ventilated rooms, recreation areas, and access to necessary utilities.

OTHER AMENITIES:

Sri Siddhartha Dental College proudly features a state-of-the-art auditorium, meticulously designed with cutting-edge acoustic engineering, intelligent seating solutions, high-definition digital display systems, and advanced sound and lighting technology. This modern facility comfortably accommodates up to 320 attendees, providing an exceptional environment for academic events, conferences, and cultural programs.

"Sri Siddhartha Dental College is in the process of establishing a pioneering Centre of Excellence in Advanced Dentistry, envisioned as a hub for innovation, research, and specialized clinical care. Anchored in cutting-edge technology and interdisciplinary expertise, the centre will prominently focus on Sports Dentistry, offering comprehensive solutions for the prevention, diagnosis, and management of oro-facial injuries among athletes—an emerging and vital domain in dental science.

Complementing this initiative, a world-class Aesthetic Dentistry Unit will be developed, dedicated to the art and science of smile design. Leveraging advanced digital planning tools and minimally invasive techniques, this unit will redefine esthetic outcomes by offering highly customized, precision-driven smile enhancements, embodying the future of personalized dental care."



PART - A



1. Admission Process

As per the directives of the Hon'ble Supreme Court of India and the ordinances issued by the Central Government, admissions to Postgraduate Medical (MD/MS) and Dental (MDS) courses for the academic year 2025–26 in the constituent colleges of Sri Siddhartha Medical College & Hospital, Tumkur, Sri Siddhartha Institute of Medical Sciences & Research Centre, T. Begur, and Sri Siddhartha Dental College & Hospital, Tumkur will be strictly based on NEET (PG) 2025 scores. The admission process will be conducted by the Medical Counselling Committee (MCC) under the Directorate General of Health Services (DGHS), Ministry of Health & Family Welfare, Government of India.

A). Sri Siddhartha Medical College, Tumkur (On-Campus Institution)

S. No.	MEDICAL (MD/MS) PG Degree Courses	Total Intake	All India Quota	NRI Quota
			85%	15%
Pre- Clinical (Non-Clinical)				
1.	MD Anatomy	02	02	-
2.	MD Physiology	03	03	-
Para – Clinical (Non-Clinical)				
3.	MD Pathology	10	10	-
4.	MD Microbiology	02	02	-
5.	MD Community Medicine	02	02	-
6.	MD Pharmacology	04	04	-
Clinical				
7.	MD General Medicine	14	09	05
8.	MD Paediatrics	12	10	02
9.	MD Anaesthesiology	12	12	--
10.	MD Radio- Diagnosis	10	05	05
11.	MD Dermatology, Venereology & Leprosy	08	04	04
12.	MD Psychiatry	03	03	--
13.	MD Respiratory Medicine	03	03	--
14.	MD Emergency Medicine	03	03	--
15.	MS Obstetrics and Gynaecology	13	09	04
16.	MS Orthopaedics	10	09	01
17.	MS Otorhinolaryngology	08	08	--
18.	MS General Surgery	12	12	--
19.	MS Ophthalmology	08	08	--
Total Seats		139	118	21

**B).Sri Siddhartha Institute Of Medical Sciences & Research Centre, T-Begur
(Off-Campus Institution)**

S. No.	MEDICAL (MD/MS) PG Degree Courses	Total Intake	All India Quota	NRI Quota
			85%	15%

Pre- Clinical (Non-Clinical)

1.	MD Anatomy	05	05	--
2.	MD Physiology	05	05	--
3.	MD Biochemistry	05	05	--

Para – Clinical (Non-Clinical)

4.	MD Pathology	02	02	--
5.	MD Pharmacology	02	02	--

Clinical

6.	MD General Medicine	04	02	02
7.	MD Paediatrics	04	03	01
8.	MD Anaesthesiology	04	04	--
9.	MD Radio- Diagnosis	04	02	02
10.	MD Dermatology, Venereology & Leprosy	04	02	02
11.	MD Psychiatry	04	04	--
12.	MD Respiratory Medicine	02	02	--
13.	MS Obstetrics and Gynaecology	04	02	02
14.	MS Orthopaedics	04	03	01
15.	MS Otorhinolaryngology	04	04	--
16.	MS General Surgery	04	04	--
17.	MS Ophthalmology	04	04	--
	Total Seats	65	55	10

C). Sri Siddhartha Dental College, Tumkur (On-Campus Institution)

S. No.	DENTAL PG Degree (MDS) Courses	Total Intake	All India Quota	NRI Quota
			85%	15%
1.	MDS Conservative Dentistry & Endodontics	02	01	01
2.	MDS Oral & Maxillofacial Surgery	02	02	--
3.	MDS Orthodontics & Dentofacial Orthopedics	02	01	01
4.	MDS Periodontology	02	02	--
5.	MDS Pedodontics & Preventive Dentistry	02	02	--
6.	MDS Prosthodontics and Crown & Bridge	02	02	--
7.	MDS Oral Pathology & Microbiology	02	02	--
	Total Seats	14	12	02

3. Distribution of Seats

- General Category: 85 % seats are reserved under this category. Admission to this category will be made on the basis of NEET (PG) 2025 Merit list.
- NRI (Non Resident Indians) / PIO (Persons of Indian Origin) / FN (Foreign Nationals) Category: 15 % seats are reserved under this Category.
The Foreign National (FN), wards of Persons of Indian Origin (PIO) settled abroad and wards of Non Resident Indians (NRI) are eligible to apply under this category.
- From, 2017 the Hon'ble Supreme Court of India in W.P.(C) No.267 of 2017 (Dar-Us-Slam Educational Trust case) directed the MCC of DGHS, MoHFW to conduct counseling of 100% seats of Deemed Universities.

Note: As per the order of the Hon'ble Supreme Court of India dated 12.12.2022, there will be four rounds of counselling for admission: Round 1, Round 2, Round 3, and Stray Vacancy Round. All four rounds will be conducted online by the Medical Counselling Committee (MCC). Candidates who have qualified for All India Quota seats based on their rank in NEET PG, conducted by the National Board of Examinations (NBE)—including those from the Union Territory of Jammu & Kashmir—will be eligible to participate. Eligible candidates can download their Rank Letter / Result from the official NBE website.

4. Eligibility and Qualifications: Regarding Eligibility and Qualifications of PG Medical and Dental Courses is available at National Board of Examinations. For more details: <https://www.natboard.edu.in/>

5. Annual tuition fee structure for the academic year 2025-26:

(a) The annual fees payable by the candidate admitted to the constituent Colleges of SSAHE viz., Sri Siddhartha Medical College & Hospital, Tumkur, Sri Siddhartha Dental College & Hospital, Tumkur and Sri Siddhartha Institute of Medical Sciences & Research Centre, T-Begur for the academic year 2025-26, will be as given below...

PG - Medical Degree Annual Tuition Fee structure for the A.Y 2025-26
i) For All India Quota / General Merit Quota Seats

SRI SIDDHARTHA MEDICAL COLLEGE, TUMKUR & SRI SIDDHARTHA INSTITUTE OF MEDICAL SCIENCES & RC, T-BEGUR				
Sl. No.	Course Name	Tuition Fee (in Rs.)	Other Fee (in Rs.)	University Fee (in Rs.)
		(1)	(2)	(3)
<i>Pre-Clinical (Non-Clinical)</i>				
1.	MD Anatomy	1,00,000/-	81,000/-	50,000/-
2.	MD Physiology	1,00,000/-	81,000/-	50,000/-
3.	MD Biochemistry	1,00,000/-	81,000/-	50,000/-
<i>Para – Clinical (Non-Clinical)</i>				
4.	MD Pathology	10,00,000/-	81,000/-	50,000/-
5.	MD Microbiology	3,00,000/-	81,000/-	50,000/-
6.	MD Community Medicine	3,00,000/-	81,000/-	50,000/-
7.	MD Pharmacology	3,00,000/-	81,000/-	50,000/-
<i>Clinical</i>				
8.	MD General Medicine	60,00,000/-	81,000/-	50,000/-
9.	MD Paediatrics	60,00,000/-	81,000/-	50,000/-
10.	MD Anaesthesiology	32,50,000/-	81,000/-	50,000/-
11.	MD Radio- Diagnosis	70,00,000/-	81,000/-	50,000/-
12.	MD Dermatology, Venerology & Leprosy	70,00,000/-	81,000/-	50,000/-
13.	MD Psychiatry	32,50,000/-	81,000/-	50,000/-
14.	MD Respiratory Medicine	50,00,000/-	81,000/-	50,000/-
15.	MD Emergency Medicine	50,00,000/-	81,000/-	50,000/-
16.	MS Obstetrics & Gynaecology	60,00,000/-	81,000/-	50,000/-
17.	MS Orthopaedics	60,00,000/-	81,000/-	50,000/-
18.	MS Otorhinolaryngology	50,00,000/-	81,000/-	50,000/-
19.	MS General Surgery	60,00,000/-	81,000/-	50,000/-
20.	MS Ophthalmology	50,00,000/-	81,000/-	50,000/-

ii) For NRI / PIO / FN Quota Seats

Sl. No	Course Name	Tuition Fee (in Rs.)	Other Fee (in Rs.)	University Fee (in Rs.)
		(1)	(2)	(3)
1.	MD General Medicine	1,00,000,00/-	81,000/-	50,000/-
2.	MD Paediatrics	1,00,000,00/-	81,000/-	50,000/-
3.	MD Radio-Diagnosis	1,50,000,00/-	81,000/-	50,000/-
4.	MD Dermatology, Venerology & Leprosy	1,50,000,00/-	81,000/-	50,000/-
5.	MS Obstetrics & Gynaecology	1,00,000,00/-	81,000/-	50,000/-
6.	MS Orthopaedics	1,00,000,00/-	81,000/-	50,000/-

PG (MDS) - Dental Degree Annual Tuition Fee structure for the A.Y 2025-26

i) For All India Quota / General Merit Quota Seats

SRI SIDDHARTHA DENTAL COLLEGE, TUMKUR				
Sl. No	Course Name	Tuition Fee (in Rs.)	Other Fee (in Rs.)	University Fee (in Rs.)
		(1)	(2)	(3)
1.	Conservative Dentistry & Endodontics	9,00,000/-	81,000/-	40,000/-
2.	Oral & Maxillofacial Surgery	9,00,000/-	81,000/-	40,000/-
3.	Orthodontics & Dentofacial Orthopedics	9,00,000/-	81,000/-	40,000/-
4.	Periodontology	6,75,000/-	81,000/-	40,000/-
5.	Pedodontics & Preventive Dentistry	6,75,000/-	81,000/-	40,000/-
6.	Prosthodontics and Crown & Bridge	7,50,000/-	81,000/-	40,000/-
7.	Oral Pathology & Microbiology	3,50,000/-	81,000/-	40,000/-

ii) For NRI / PIO / FN Quota Seats

Sl. No	Course Name	Tuition Fee (in Rs.)	Other Fee (in Rs.)	University Fee (in Rs.)
		(1)	(2)	(3)
1.	PG-Dental Degree (MDS)	16,00,000/-	81,000/-	40,000/-

(b) **Mode of Payment** - At the time of admission, the candidate will have to bring a demand draft/s OR Proof of RTGS / NEFT of entire fees mentioned in clause (5a) above:

Name of the College : Sri Siddhartha Medical College, Agalakote, B.H. Road, Tumkur – 572107		
Description of Fee	DD in favour of	Bank Details for RTGS / NEFT payment
Medical	Secretary, SSMC, Tumkur	Name of the A/c. “SECRETARY, SSMC” Name of the Bank: Canara Bank Branch Name: SSMC Branch, Tumkur A/c No: 20092200027300 IFSC Code: CNRB0012009
Tuition Fee		
University Registration Fee		
Hostel Fee for Boys and Girls		
1,00,000/- (Caution Deposit) + 1,74,000/- (Boarding & Mess Charges)	Secretary, SSMC, Tumkur	Name of the A/c. “SECRETARY, SSMC” Name of the Bank: Canara Bank Branch Name: SSMC Branch, Tumkur A/c No: 20092200027261 IFSC Code: CNRB0012009
For more information on fee structure logon to www.ssmctumkur.org		

Name of the College: Sri Siddhartha Dental College, Agalakote, B.H. Road, Tumkur -572102		
Description of Fee	DD in favour of	Bank Details for RTGS / NEFT payment
Dental	Secretary, SSDC, Tumkur	Name of the A/c. “SECRETARY, SSDC” Name of the Bank: Canara Bank Branch Name : SSMC Branch, Tumkur A/c No: 20092200027040 IFSC Code: CNRB0012009
Tuition Fee		
University Registration Fee		
Hostel Fees for Boys & Girls		
50,000/- (Caution Deposit) + 1,74,000/- (Boarding & Mess Charges)	Secretary, SSMC, Tumkur	Name of the A/c. “SECRETARY, SSMC” Name of the Bank: Canara Bank Branch Name: SSMC Branch, Tumkur A/c No: 20092200027261 IFSC Code: CNRB0012009
For more information on fee structure logon to www.ssdctumkur.org		

Name of the College: Sri Siddhartha Institute of Medical Sciences & Research Centre, T-Begur, Nelamangala Taluk, Bangalore Rural District - 562123		
Description of Fee	DD in favour of	Bank Details for RTGS / NEFT payment
Medical Tuition Fee	SSIMS&RC, T-Begur,	Name of the A/c. "SSIMS & RC" Name of the Bank: UCO Bank Branch Name : T-Begur, A/c No: 32710110022993 IFSC Code : UCBA0003271
University Registration Fee		
Hostel Fee for Boys & Girls		
2,00,000/- (Caution Deposit) + 2,50,000/- (Boarding & Mess Charges)	SSIMS&RC, T-Begur,	Name of the A/c. "SSIMS & RC" Name of the Bank: UCO Bank Branch Name : T-Begur A/c No: 32710110023143 IFSC Code : UCBA0003271
For more information on fee structure logon to www.ssimrc.in		

Only Nationalized Banks Demand Drafts (D.D.) will be accepted. The request for extension of time limit for payment or to accept partial payment will not be entertained under any circumstances.

6. Physical Reporting Venue:

Name of the College	Venue	Time
Sri Siddhartha Medical College	Office of the Principal Sri Siddhartha Medical College Agalakote, B.H. Road, Tumkur - 572107	9.00 AM To 5.00 PM
Sri Siddhartha Institute of Medical Sciences & Research Centre,	Office of the Principal Sri Siddhartha Inst. of Medical Sciences & Research Centre, T-Begur, Nelamangala Taluk, Bangalore Rural District - 562123	
Sri Siddhartha Dental College,	Office of the Principal Sri Siddhartha Dental College Agalakote, B.H. Road, Tumkur - 572107	

7. Documents required at the time of admission:

The following mentioned documents are to be submitted in original at the time of reporting to the College as per the schedule announced by MCC for General and NRI Candidates:

A) Come prepared for Admission: The following original documents are to be submitted for verification during Admission.

1. Online allotment letter of MCC
2. NEET PG 2025 Qualified Marks / Rank Card
3. 10th Std / SSLC Marks Card (for date of birth proof and parent's name)
4. MBBS / BDS marks Card of all Phases / Years
5. Degree Certificate / Provisional Degree Certificate
6. Internship completion certificate.
7. Attempt Certificate
8. State Council Registration Certificate
9. MCI / DCI Screening Certificate (for Abroad students)
10. Caste certificate (if applicable)
11. Copy of Aadhar card
12. Copy of PAN card
13. Migration Certificate
14. Six passport size colour photographs
15. Three self attested photo copies separate sets of above all documents as per above sequence.
16. Fee Remittance Details OR Demand Draft of Tuition Fees.

In addition to the above, the NRI Applicants should have to submit the following additional documents.

- 1) Affidavit of the person who is NRI and the sponsorer.
- 2) Documents claiming that the sponsorer is an NRI (Passport, Visa of the sponsorer)
- 3) Affidavit from the sponsorer that he/ she will sponsor the entire course fee of the candidate.
- 4) Embassy Certificate of the Sponsorer.
- 5) Citizenship of the candidate if holding OCI/PIO
- 6) Relationship with NRI with the candidate as per the court order of Hon'ble Supreme court of India in the case W.P (C) no. 689/2017 – Consortium of Deemed Universities in Karnataka (CODEUNIK) & Anr. Vs Union of India & Ors Dated 22.08.2017

The candidates who are claiming to be eligible for admission under NRI quota, has to fulfil the eligibility criteria, as per the directions/orders of the Hon'ble Supreme Court of India

Who can sponsor under NRI Seat:

Sl. No.	Eligibility
1	Mother or Father of the student
2	Real Brother and Sister of the student
3	Real Brother and sister of Father or Mother i.e real uncle and real aunt of the student
4	Father and Mother of Father or Mother of the student i.e. Grand parents
5	First degree – paternal and maternal cousins of the student.

Important Note: NRI Applicants:

Applicants seeking admission under the NRI quota must ensure that the person sponsoring them holds valid NRI status, resides abroad, and has acted as the guardian of the student. A Notarized Affidavit confirming this relationship must be submitted at the time of admission on a ₹20 stamp paper. The NRI quota also includes Overseas Citizens of India (OCI) and Persons of Indian Origin (PIO). The course fee must be paid in US Dollars; if paid in Indian Rupees, the payment must be made through the NRI account of the sponsorer.

8. Cancellation of Admission & Refund of Fees

a) Cancellation: A candidate who has confirmed his / her admission may cancel it by submitting an application to the Competent Authority, along with the following....

- I. Application for cancellation duly signed by the candidate & co - signed by Parent / Guardian.
- II. Original Admission Letter
- III. Original Fees Receipts

b) Cancellation and Refund Policy for Post Graduate course: A candidate who has confirmed his / her admission may cancel it by submitting an application to the Competent Authority of SSMC/SSDC/SSIMS&RC

After cancellation of Admission, following rules for refund of fees will be binding on candidate...

- 1) Candidate should inform the institution about his intention to join or not to join the institution.
- 2) It is mandatory to join the institution in stipulated time as mentioned in the counselling schedule to the MCC/DGHS or else his admission stands cancel and vacant seat will be made available to subsequent rounds.
- 3) If candidate cancels the admission before commencement of academic session as per the MCC/NMC/DCI, the Entire amount of Annual Tuition Fees will be refunded after deduction of processing fee of Rs. 20,000/-.
- 4) If candidate does not inform the institution about his intention or does not join within 7 days after start of academic session, his admission stands cancelled. However in such case if institution notable fill up the seat even by end of 30 days after opening academic session, then Annual Fees collected will be refunded after deduction of 50% of the fees collected and processing fee of Rs.20,000/- .

- 5) If candidate cancels the admission after commencement of academic session as per MCC/NMC/DCI, a candidate has to pay the entire course fee.
- 6) No cancellation is permitted after second round of admission by MCC/DGHS.
- 7) The refund clause mentioned above will also be applicable to the candidates admitted in subsequent round(s).
- 8) The eligible refund will be made within 30 days from date of application for cancellation along with original receipt of fees paid. No correspondence in this regard will be entertained during this period.
- 9) After 2nd Round of Admission by MCC/DGHS, in event of failure to continue the chosen postgraduate program, for whatever reasons, the students will be liable to pay the complete course fee to secure NOC and return of original documents from the institute concerned. Application needs to be submitted to the Principal/Dean of the institute to this effect.

c) Cancellation during the conduct of the course

In event of failure to qualify or continue the chosen PG programme, for whatever reasons, the students will be liable to pay the complete course fee to secure NOC and return of original documents from the institute concerned. Application needs to be submitted to the Principal/Dean of the college to this effect.

9. Commencement of Classes

The PG Medical / PG Dental course will commence from the instructions/directions of National Medical Commission or Dental Council of India, (Date will be notified in university / Medical / Dental college website) Candidates will be required to be present in the campus and report to the Dean / Principal of the respective college to which he / she is admitted.

10. Discipline

The candidates admitted in the constituent colleges of the University are subjected to the discipline and conduct rule of the SSAHE. A disciplinary Committee will deal with all cases either suo-moto or when referred to by the Dean / Principal of the concerned College. The decision of the Vice-Chancellor shall be final in this regard.

11. Court Jurisdiction

All legal disputes related to admission procedure to constituent colleges of Sri Siddhartha Academy of Higher Education are subject to the jurisdiction of the Courts at Tumkur and High Court of Bangalore bench at Karnataka, with advance legal notice of one month to SSAHE.

12. Disclaimer

Sri Siddhartha Academy of Higher Education (SSAHE) has not authorized any individual or agency to act as an agent for dealing with admissions to its constituent colleges. SSAHE will not be held responsible for any activities conducted by such individuals or agencies.

The contents of the Prospectus are subject to change at the discretion of the University. Any modifications or updates will be notified on the official SSAHE website: www.ssahe.edu.in.

13. Ragging

Ragging in any form, either within or outside the educational institution, is strictly prohibited at SSAHE campuses. In accordance with the Supreme Court of India's directive, ragging is considered a criminal offence, and any involvement in such activities will lead to severe consequences.

The University has established specific rules and regulations to combat ragging, in line with the UGC guidelines. Students found guilty of participating in ragging will face disciplinary action, which may include legal proceedings as prescribed by law.

SSAHE is committed to providing a safe, respectful, and supportive environment for all students, free from any form of harassment or intimidation.

14. Hostel Rules and Regulations

The Hostel Rules & Regulations are mandatory for all students pursuing their studies in the constituent colleges of Sri Siddhartha Academy of Higher Education (SSAHE). A detailed booklet outlining the rules and regulations will be provided to each student upon admission. It is expected that students residing in the hostel (both Boys' and Girls' Hostels) adhere strictly to these guidelines for the duration of their stay.

Hostel Procedures:

- **Leaving the Hostel Premises:**

Students intending to leave the hostel premises for emergencies, weekends, or holidays must follow the prescribed procedure and obtain necessary permission from the hostel authorities. This includes informing the authorities about the departure and adhering to the stipulated protocol for safety and security.

- **Failure to Inform or Return on Time:**

If a student leaves the hostel without seeking permission or fails to notify the authorities of their arrival or return within the designated time frame, the responsibility for such actions will rest with the student and their legal guardian or parents. The hostel authorities will not be held liable.

- **Parental/Guardian Responsibility:**

In the event of a student's failure to return on time or inform the authorities about their whereabouts, it is mandatory for the **parents or legal guardians** to report the student's whereabouts to the hostel authorities immediately. They must provide necessary documentation as proof of the student's location and any extenuating circumstances.

Disciplinary Action:

Any violation of the hostel rules and regulations will result in disciplinary action in accordance with the established **SSAHE** guidelines. This may include penalties or other actions as prescribed by the university.

Hostel Accommodation & Facilities:

The university provides comfortable and well-equipped hostel accommodation for both **undergraduate** and **postgraduate** students. These hostels meet international standards and include the following facilities:

- Separate hostels for boys and girls
- Multi-gym
- Wi-Fi connectivity
- Indoor sports facilities
- Advanced communication facilities

If the students.....

- 1) Leave the hostel premises without seeking necessary permission from hostel authorities or any intimation or not following laid down procedure of the hostel.
- 2) Do not return or intimate his/ her arrival in hostel in time it will be considered as responsibility of the concerned student and legal parents' guardian.
- 3) In such situation it is mandatory for parents to report of whereabouts of their ward in any circumstances, legal guardian to intimate concerned authorities with necessary documents as proof.

Violation of the disciplinary rules will be followed by disciplinary action as per SSAHE rules.

The university provides comfortable hostel accommodation. Adequate number of international standard hostels for undergraduate and post graduate students of all disciplines (separate for boys and girls) with multi-gym, Wi-fi, indoor sports and advanced communication facilities are provided in the campus.

15. Details of the teaching faculty, physical and academic infrastructure

The detail of teaching faculty of Sri Siddhartha Medical College (SSMC), Sri Siddhartha Institute of Medical Sciences & Research Centre (SSIMS&RC) and Sri Siddhartha Dental College (SSDC) is available on constituent college websites: SSMC : www.ssmctumkur.org, SSIMS&RC: www.ssimrc.in , SSDC: www.ssdctumkur.org,

16. Physical and Academic Infrastructure

The details of Physical and Academic Infrastructure and other facilities available like Hostel Accommodation, Library, Hospital, Bank etc. is available on university official website: www.ssahe.edu.in

17. Course Structure/ Syllabus

The broad outline of the syllabus, detailed course structure including teaching hours, practical sessions and clinical posting is available on website: www.ssahe.edu.in

18. Counselling Scheme: (As per MCC/DGHS website www.mcc.nic.in)

The counselling scheme for medical and dental admissions through the Medical Counselling Committee (MCC) and Directorate General of Health Services (DGHS), as per their official guidelines, typically follows these steps:

1. Submission of Application Form:

- Students must fill out the online application form available on the official MCC website (www.mcc.nic.in) to participate in the counselling and admission process.
- The form submission is crucial to begin the process of allocation to medical colleges.

2. Counselling Process:

- Once the application form is submitted, the counselling process begins. It usually occurs in multiple rounds, with the first round focusing on the allocation of seats based on merit.
- Students will be allotted a college or course based on their rank and preferences chosen in the application.

3. Processing Fee:

- A processing fee must be paid by the students as part of the application process. This fee is typically non-refundable.
- The payment can be made online during the application submission on the MCC website.

4. Display of Merit List:

- After the application forms are processed, the merit list will be displayed on the MCC website. The merit list includes the names of students selected for counselling and their respective ranks.
- The merit list is the basis for the counselling and seat allotment in medical institutions.

5. Selection Process:

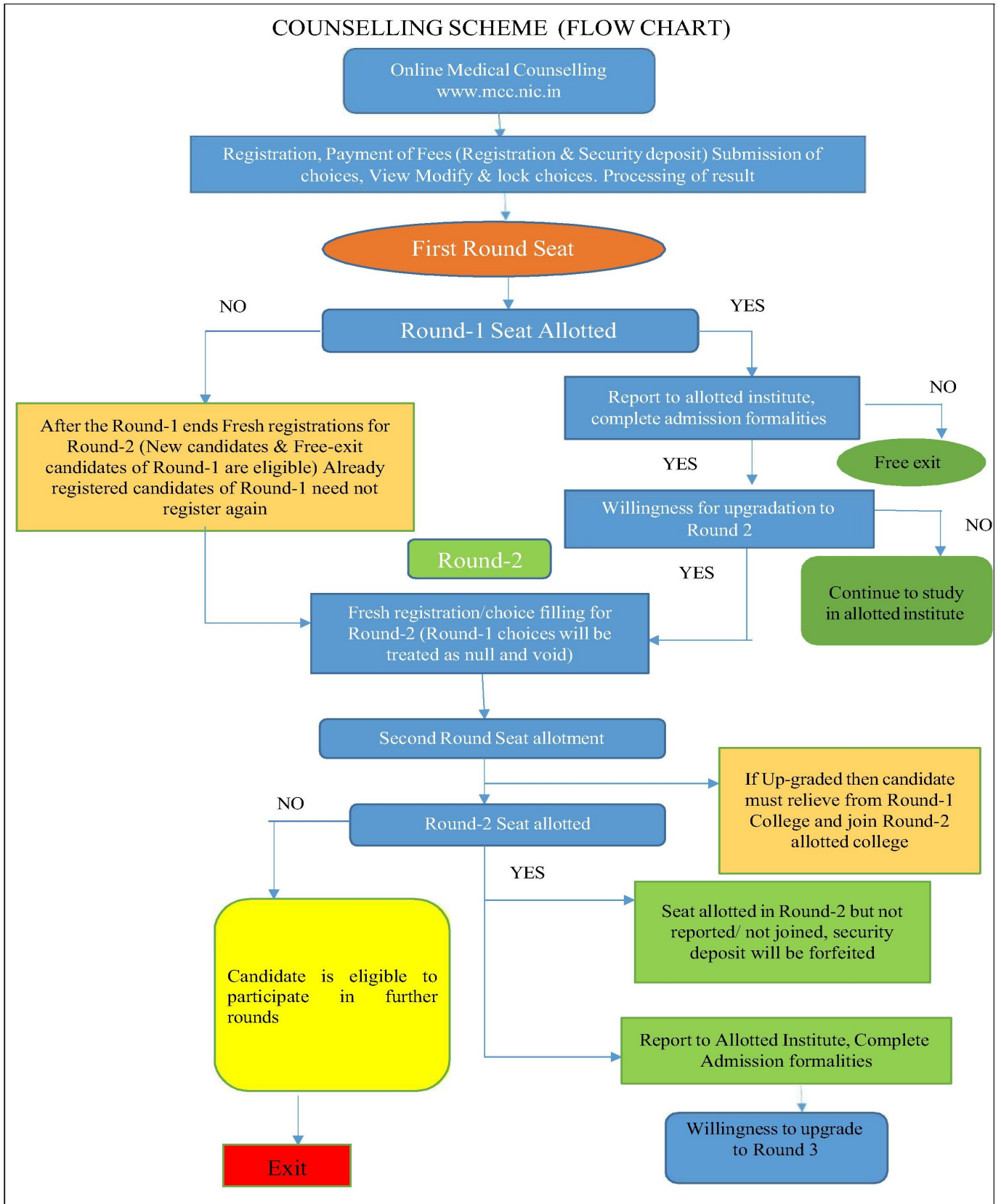
- The selection process is based on the rank in the merit list, category (if applicable), and choices filled during the application.
- Students selected in the merit list will receive a seat in one of the designated colleges based on their preference and availability of seats.

For further details or updates, students should frequently check the official MCC website (www.mcc.nic.in) for notifications, guidelines, and updates related to the admission process.

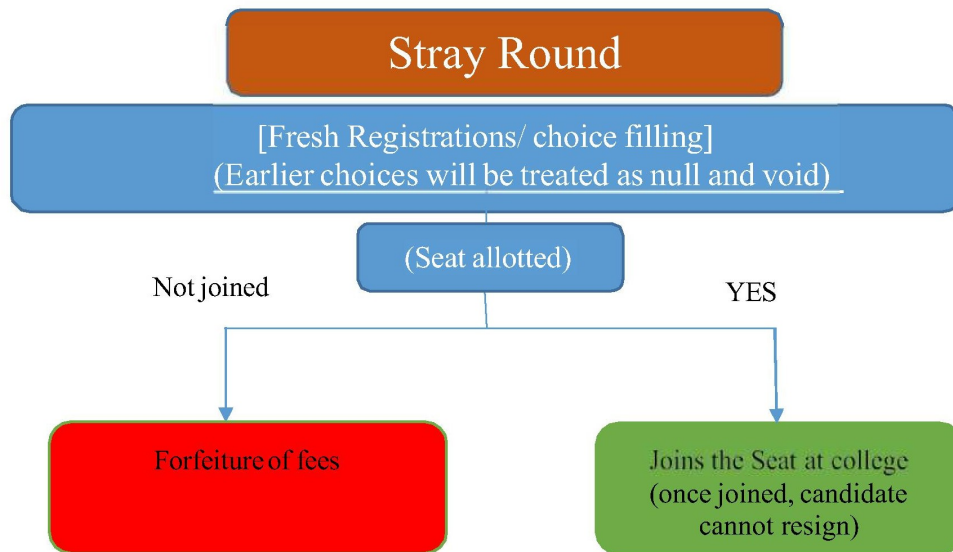
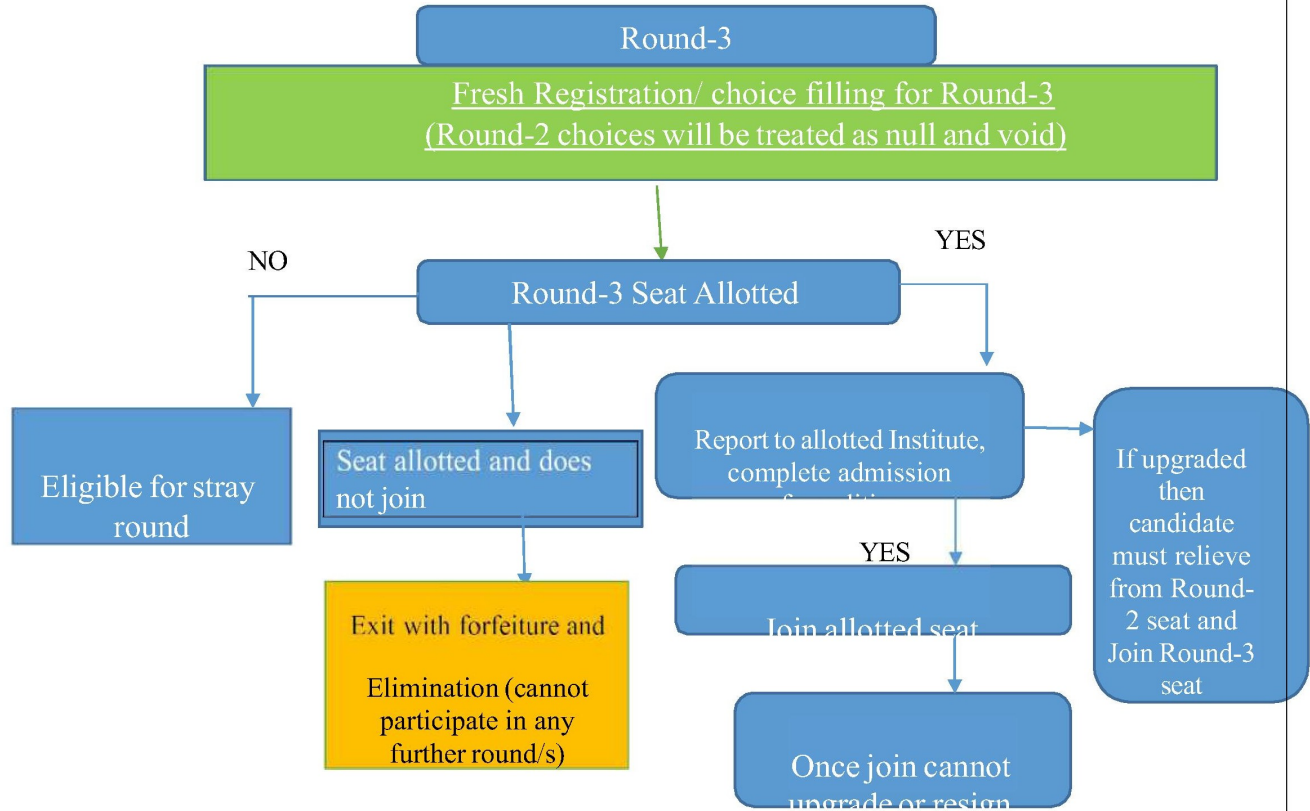
Continued to Part-B

PART - B

COUNSELLING SCHEME (FLOW CHART)



PROCESS OF COUNSELLING (FLOW CHART) ... CONTINUED FROM PAGE 1



Flow Chart is for representation purpose only. For details, refer Information Bulletin

**Registration and Counselling Process
please logon to www.mcc.nic.in**